

FAITH LUTHERAN CHURCH
EVANGELICAL LUTHERAN CHURCH IN AMERICA



THE FAITHFUL NEWS

CHURCH PHONE 812-282-6993
PASTOR'S PHONE 812-786-0083

*"Faithful Lutherans sent by Christ to serve
God's children"*

JANUARY, 2006

PASTOR'S LETTER

PASTOR JOYCE

A new baby in Bethlehem...

A new year around the corner..

"New" is a time of celebration...

sometimes a celebration of the possibilities of a new beginning, filled with
promise and hope.

sometimes a celebration of what has gone before, filled with
treasured memories.

sometimes a celebration of being able to close out the past and
have a fresh start.

"New" holds with it excitement, challenge, hope, joy, anticipation,
limitless possibilities..

"New" also holds with it a look back..

memories..(the good and the bad)..longing for what felt good, or
perhaps relief that something is finished or over.

"New" in one sense always means uncertainty..

We just don't know for sure what lies in front of us.

"New" also holds with it a profound sense of security.

It means the certainty of rebirth and renewal.

In the midst of all the changes that life presents us,

God will always be a secure rock and fortress.

Our God who gave us the gift of memory, is also the God of vision and
possibilities

Filled with promise, comfort and courage, we can face any newness
with confidence, for we never do it alone.

The new babe in Bethlehem did not stay there..

He has promised to be with us every moment of the day and
every step of the way.

Take Him with you

and go with Him into your future.

Notice:

**Annual
Congregational
Meeting**

**Sunday, January 15,
2006**

**Pitch In Lunch
Meeting follows**

FINANCE MATTERS

VERONICA RIFE & PEG GERNAND

The budget proposed by Council and included in the last newsletter passed by a large majority at the Congregational Meeting

In the middle of December most members received a Member Contribution report of giving through November for 2005. This report format is from the Revelations software that Faith purchased last year. This software was purchased in part for its ability to handle many aspects of the church's business. One of those areas is tracking member contributions. Council is committed to having all financial and membership records on this program and located at the church. Patti Smith has worked diligently to update member records. Peg Gernand has some experience with this software program from her previous congregation affiliation, and has been instrumental

in helping us implement the part of the program which manages member contributions. This program will be used regularly in 2006 to record members' contributions to Faith for its various missions and budget items. Faith members will receive these financial statements at least on a quarterly basis so that we can determine if we are meeting our Consecration Sunday commitment.

You will receive another contribution report in January reflecting your total 2005 contributions. If you have questions about items on your contribution statement, please contact Peg Gernand or Veronica Rife to reconcile. Many thanks to Peg Gernand for

her time in loading giving information into the software database.

Council wishes to thank Kathy Hayes and Barb Fitzpatrick for their hard work in keeping these contribution and income records up to date over the past few years.

FISCAL UPDATE

VERONICA RIFE

Change of Address:
Miatta Tyler
8710 Airy Brink Lane
Apt. 301
Columbia, MD 21045

Financially speaking, through the end of November Faith receipts were \$151,543.56; \$117,342.29 for Faith's budget items and \$134,201.27 for non-budget giving. You can find a list of budgeted items that haven't paid by the end of November in the council minutes elsewhere in this newsletter. Three of these items were contributions by Faith to local agencies

that are typically paid in the month of December. The report on these actions will be available at the first council meeting in January and at the annual meeting.

We continue to receive rewards from our members shopping at Meijer and Kroger grocery stores. As you shop in this year and prepare for the Super Bowl or are starting a new year diet, don't forget to use

your Meijer Community Reward card and/or Kroger gift card program. If you would like to enroll in either program, please contact Don Smith. www.Meijer.com/rewards.

YOUTH NEWS

Old News:

On December 11th the youth babysat after church and raised \$65 for Angel Tree children. We would like to thank all of those who donated. The youth shopped for three Angel Tree children with these donations and \$360 generously donated from Thrivent.

On December 18th the youth went ice skating after wrapping Angel Tree gifts. We wrapped our three Angels gifts along with the rest of the gifts church members shopped for. We had a really good show of

people and a lot of fun!

On December 21st the youth caroled around town to our sick and shut-ins and brought joy to many homes. After caroling, we went back to church and drank hot chocolate and ate cookies.

New News:

At the December meeting, we scheduled our events through the end of February. The events that we planned are as follows:

January 8th: Youth meeting after church. Then, we're going to play bingo with

KIRSTEN MCCOY

the residents of Cedar Lake Lodge.

January 29th: Spaghetti Dinner after church to help raise money for those who are going to San Antonio for the LYO Convention



Caption describing picture or graphic.

ti
n

January 29

Following worship

Menu:

Salad

Baked Spaghetti

Bread

Dessert

Please sign up by Jan. 22

Free will offering

Profits support



Caption describing picture or graphic.

Youth Activities through

January

8 Youth meeting and bingo with residents of Cedar Lake Lodge

29* Baked spaghetti dinner (funds go to Texas trip in 2006)

*Fund raising event

PRAYER REQUESTS

We ask God's special healing for:

John Taylor

Carol Hustedt

Dot Clerici

Bob Davis

Cyndi Emily

Louise Rice

Lee Gregg

Dorothy McCall

Gordon McCall

Eric Hall

Dorothy Shallers (Nancy

Falkenstein's mother)

Fran Heuton (Terri Barr's mother)

Shirley Buschman (Beth Landis's mother)

All our service men and women who serve here and overseas.

For our Faith family as we move through the interim process and determine our future direction.

For the members of the Call Committee as they begin the search for our new pastor.

If you are in need of aid, comfort or prayer please contact Pastor Joyce at 812-786-0083 or one of the prayer chain leaders: Betty Condra (282-2102), Vivian Smith (288-8531) or Nancy Vogt (282-2014).



HAPPY BIRTHDAY & ANNIVERSARY

God's blessings to these January birthdays:

Marsha Woods	1/4
Matt McCoy	1/5
Karen Lane	1/6
Bill Winn	1/7
Josh Barr	1/8
Edwin Peter	1/8
Janet Kaluga	1/10
Lindsey Landis	1/15
Kelly Cooke	1/18
Wendy Yellina	1/18
Todd Taylor	1/20
Brandon Woehrle	1/24
Gordon McCall	1/25
Gladys Krook	1/27
Sandy Maas	1/28
Dorothy Clerici	1/29
Betty Condra	1/31

We celebrate with these couples having January anniversaries:

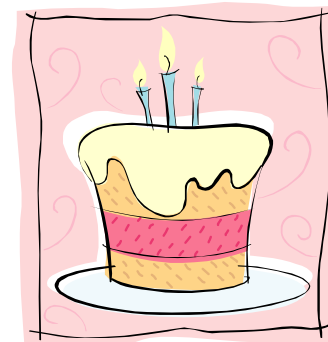
Dennis & Wendy Yellina	1/24
Ron & Edith Woodward	1/26
Jim & Nancy Falkenstein	1/26

This list is now taken from the newly completed membership information which has been entered into the computer system. If information is missing or incorrect, please let Patti Smith know.

Welcome New Baby!

Nicole Vogler gave birth to baby Phoenix James Tyler on December 21. Phoenix weighed in at 7 lbs. and was 22 inches long! Mom, Dad and baby are doing well.

Congratulations, Nicole!



The Faithful News is a monthly publication of Faith Lutheran Church, Jeffersonville, IN. Articles and information may be submitted to Patti Smith, secretary or Marsha Woods, editor

WELCA

Another year has come and gone. I cannot believe that it is already January. I hope that everyone had an enjoyable and blessed Christmas season. Looking ahead, WELCA has many projects to support this year. I hope that you can make time to join us at our meetings, Bible studies, or service projects in 2006. Please take time to read the minutes of the last WELCA quarterly meeting for specific details about these projects.

Schedule:

Sunshine Circle will meet January 11 at 10 am at the church.

Wheadon Friendship Circle meets at 7 pm the third Tuesday of each month (**January 17**) at church.

Women of the ELCA

We owe a special thanks to Arlys Johnson for hosting our annual cookie exchange and quarterly meeting in December. She provided a wonderful brunch and was a very gracious hostess. Thanks again!

A huge thanks goes out to Beth Landis who has volunteered to take over the treasurer position for WELCA and officially took over the position after the December quarterly meeting. Thanks for

your leadership and commitment!

Much was accomplished at the December quarterly meeting. Many have stepped up and volunteered to help with projects and their time is appreciated. Read below to find out about a couple of our service projects and how you can help support them.

WELCA will collect non-perishables items to send to our college students in

CARRIE MCCOY



Caption describing picture or graphic.

WELCA MINUTES

Opening Prayer lead by Peg Germand

Current Treasurer's Report by Carrie McCoy

Available balance of \$330.82 does not include any cookbook money.

Discussion about what to do with cookbook profits – tabled until next meeting

when the project is complete and we know the total profit.

Beth Landis has volunteered to take over the treasurer's position. Carrie McCoy will remain on the account as a representative from the evening circle. Asked for a volunteer to represent the day circle. Barb Campbell was

suggested, but was not present at the meeting and was unable to be contacted during the meeting. It is preferable to keep three names on the account. Kristine Young volunteered to remain on the account.

Motion made to elect Beth Landis as treasurer, with Kristine Young and Carrie

DECEMBER 3, 2005



Caption describing picture or graphic.

M
cC
oy
re-
ma
ini
ng
the
ac-
co

WELCA MINUTES

unt. Bev Haire motioned to accept. Pastor Joyce seconded. No Opposed. Motion approved.

Reports on Projects by Peg Gernand

Loaves and Fishes

Spoke with Barb Brewster and we are on the schedule for next year, watch for volunteer sign-up sheets to be posted in the near future.

College Care Packages

We had traditionally sent these out in October, but it was not done this year. Discussed continuing this project, but we will send them out for finals week instead. Beth Landis volunteered to generate a list of needed items and keep the evening group updated. Bev Haire said she would be willing to help. Ask those in the congregation to donate items; we will publish the list of items in the newsletter. Asked that the list be available by December 13th in order to publish in January newsletter. Pastor Joyce will work on getting a list of all the college students.

Peace of Home

There was agreement that we should continue to support those in the military. We will tie this project in with the college care packages, except we will send Easter packages to our servicemen and servicewomen. We will ask that anyone in the congregation who has a loved one in the military or knows of anyone in the military that they think

would appreciate receiving a package, please inform the group of their name and address. Kristine Young volunteered to be the contact person for this project. Pastor will check with Eric Hall and ask what type of items they would like to receive.

Dorothy McCall stated that Gordon would be willing to ship the packages for these projects, with the understanding that the packages must be well packaged and correctly addressed.

Cookbooks

The price for printing the cookbooks has gone up slightly due to the number of pages. Cost for printing (per book) is \$4.28. 143 cookbooks have been pre-ordered. We will be printing 150 copies. They should be ready before Christmas. The printer will reprint at a reduced rate.

Center for Women and Families

We will continue to support this program. Discussion about contacting them to see if there are any specific needs they need filled and how WELCA can support them.

Thrivent Funds

Becky Hall had spoken with Peg and told her that Thrivent had between \$200 and \$400 available for a service project that needed to be used by the end of the year. Discussion on how to use these funds to support angels from the angel tree or provide food baskets to families. Check for names of

families in need with Sue Neathamer

Poinsettia Delivery after Christmas service

Linda Woehrle suggested that volunteers deliver poinsettias to the sick and shut-in after the service on Christmas day. Linda volunteered to be the contact person for this project.

WELCA magazines

Donate our past issues of Lutheran Woman Today to be placed in visitor bags or made available to other interested women in the congregation. Possibly include some type of information card about WELCA in the visitor bags with information about Bible study times.

Update on Cyndi Emily from Bev Haire

Discussed delivering meals to the family or food baskets to the waiting area at the hospital. Bev Haire said she would let us know when the need arises. Please let her know if you are interested in helping with this.

Bible study meetings

Sunshine Circle: 6-12 attending the study each month. There will be no meeting in December, but they will meet at their regular time in January.

Wheadon Friendship Circle: 4-12 women have attended each month. November's meeting was can-

DECEMBER 3, 2005 (CONTINUED)

celled due to weather and had to be quickly rescheduled for the following week. Discussion on whether to have the December Bible study or not, as Peg will be out of town and December is a busy month. Pastor Joyce said she would lead the study if there women were interested in attending. Several women showed an interest. It was decided to have the Bible study at the regular time, December 20th at 7:00 pm at church.

Lenten Dinners

Sign-up sheet was passed around. There is a need for someone to help oversee the dinners. Still need a volunteer.

Altar Guild

Sign-up sheet for 2006 was passed around. Betty Condra informed the group that Clorox water should not be used on the silver pieces. Only warm soapy water.

The date for the next quarterly meeting was set for Saturday, March 4, 2006. We will be having a business meeting and we will prepare the college and military care packages for shipping.

Closing Prayer

Motion to adjourn meeting by Linda Woehrle. 2nd by Kristine Young. Meeting adjourned.

Attendance: Pastor Joyce Gerwing, Carrie McCoy, Peg Gernand, Beth Landis, Kristine Young, Linda Woehrle, Dorothy McCall, Bev

WEEKDAY CHURCH SCHOOL

Weekday church school will begin again after the Christmas break on Jan. 5th. The week before Christmas we welcomed a parent onto to the staff. Michelle Thomas has a son Dylan in Peg Germand's class. She will be helping in recreation in the pre-K class on both Tuesdays and Thursdays. Welcome aboard and thanks for volunteering your time.

We are badly in need of a person to work on Thursday morning in the art room with the Pre-K class. We would need this help from 9:15 until 12:30. If you would be interested in interacting with 29 four year olds,

PLEASE call Carol Taylor at 228-1329. Terri Barr is the lead art teacher and she teaches on Tuesdays but she must work on Thursday mornings. All the art projects are pre-planned and materials are available to do the project. Terri sees to this before she leaves on Tuesdays. There is a home schooled teen that comes in to help both Tuesday and Thursday in art. She has done this for four years and knows the art room in and out, as well as knowing the projects and the best ways to do them. In the interest of insurance and responsibility she can not lead the class because she is not a

CAROL TAYLOR

church member, or eighteen years old. If you or anyone else you know from church would be interested in helping on Thursdays we would love to have you on the weekday team!

The Children in all three classes will be talking about how Jesus grew from a baby to a child like them to a teen and finally to an adult. They will also learn that this is also God's plan for their growth. Later in the month we will learn about the season called winter. How he plans that the trees and plants will sleep to wake up again in the spring and it gets warmer outside.



CHRISTIAN EDUCATION

Vacation Bible School (yep, you read right)

On the last day of VBS last July the teachers discussed creating some of our own material for the class room this year. It was decided that those interested in helping with this project would meet during the month of January and see what we could do on our own. Guess what folks, its January and time to work on this project. We are calling all persons interested in helping in this

project to a meeting on Tuesday evening at 7 00 pm on January the 10th. Plan on working until 9:00pm.

SCS

Sunday church School will resume classes on Sunday, January 8. We welcome Jack Hayes' three cousins to the program. One is in Mr. T's class, one is in the 6th grade and one is in 3rd grade. We welcome them and thank them for their help in the Christ-

CAROL TAYLOR

mas play. The Adult class continues to grow, and the adult confirmation class has 5 people who rotate in and out but we never seem to get every one every week. We are going over prayer and The Lords Prayer learning what God wants us to do. We would love to have a few more people in this class. When we finish the Lords Prayer it has been suggested that we do a study of the books of Ester and Ruth, which will probably be during Lent.



JANUARY 2006—FAITH LUTHERAN

Sun	Mon	Tue	Wed	Thu	Fri	Sat
1 No SCS 10:30 Worship Coffee time	2 10 am Quilters	3 NO WCS	4 5:45 3D 7:00 pm Choir & Catechism	5 9:15 am WCS	6	7
8 9:15 SCS 10:30 Worship Coffee time Youth Meets Council Meets	9	10 9:15 am WCS 7 pm VBS meeting <i>Newsletter Articles Due for February</i>	11 10 am WELCA 5:45 3D 7:00 pm Choir & Catechism	12 9:15 am WCS	13	14
15 9:15 SCS 10:30 Worship Pitch In Lunch Annual Congre- gational Mtg	16 10 am Quilters	17 9:15 am WCS 7 pm WELCA Wheadon Circle	18 5:45 3D 7:00 pm Choir & Catechism	19 9:15 am WCS	20	21
22 9:15 am SCS 10:30 Worship Coffee Time	23	24 9:15 am WCS	25 5:45 3D 7:00 pm Choir & Catechism	26 9:15 am WCS	27	28
29 9:15 SCS 10:30 Worship Youth Spaghetti Lunch	30	31 9:15 am WCS				

PRESIDENT'S LETTER

MARSHA WOODS

Happy New Year!

Traditionally this is a good time to reflect on the previous year and make plans for the upcoming one.

Thinking in terms of our church family and reflecting on the past year, we continue to have MUCH for which to be thankful. We have accomplished a good deal in terms of looking inward and updating our infrastructure, our mission and our ministry. We are enjoying both the traditions we cherish and a resurgence of energy and enthusiasm while we embrace change...and we ARE embracing change!

As of this writing, we have 10 people nominated for the 4 council seats that will become available at our January meeting. To put this in perspective, one of our more negative traditions is that we've usually had to *beg* people to serve on council in the past. The fact that these folks are stepping up and agreeing to serve is *very* exciting.

The call committee is preparing the paperwork that needs to be submitted to Synod to begin their work. Much of the information to complete the paperwork was done as part of the committees and workshops that we held throughout

2005. Again, the fact that the congregation participated and didn't leave it all to a small committee speaks well for us, I think. Once the paperwork is submitted we should expect to receive potential candidates and begin the selection process in earnest.

We have a rich tradition of volunteers who have supported and sustained the operations of our church throughout the years. Among those folks are Kathy Hayes and Barb Fitzpatrick, who have kept track of contributions and income for several years. Now that we are putting those records on the church computer, they have chosen to pass those duties on. We are so very grateful to them for their work over the past years. This record-keeping will once again fall under the responsibilities of the church secretary.

And, speaking of church secretaries, Patti Smith has literally been a God-send to me. She has taken over preparing the bulletins in addition to a myriad of details. Thank you, thank you, my friend.

Edie Maas continues as our church treasurer (I don't even remember how many

years now) and juggles the bills that need to be paid, which is not always an easy task. She is and has been invaluable in this position. Thank you, Edie!

Four very dedicated council members will be retiring this year: Veronica Rife, who has diligently counted the offering week in and week out; Barb Brewster, who wears too many hats to enumerate; Dick Klemens, always ready to take on any challenge and see it through; and Rick Barr, Mr. Technology and all around pinch hitter. Veronica, Barb and Dick are part of the call committee, and I'm sure we can find other areas to keep Rick busy as well, but their presence on council will be missed! Thanks to all of you.

There are many more who work behind the scenes to see that the details are taken care of. We will try to recognize others in the coming months.

Now, for the resolutions...have you made yours? How are you at keeping the ones you make? What resolutions are you making for your spiritual life? More regular attendance at Sunday worship? Attend Sunday School? Participate more in

church activities and opportunities? Join a Bible study group? Focus on giving thanks for God's blessings instead of grouching about what we don't have?

Our annual meeting will be held January 15. Following worship we will have a pitch in meal (meat will be provided) and then get on with the business at hand, which includes the election of the new council members and the election of next year's officers. The annual reports will be ready for members to pick up Sunday, January 8 so that you can review the reports prior to the meeting. We hope to see you there!

We are spirit led...and so we serve our God.



JANUARY 2006

NEWSLETTER

2014 Allison Lane
 Jeffersonville, IN 47130
 Rev. Joyce Gerwing, Pastor
 Church Office 812-282-6993

FAITH LUTHERAN CHURCH
 EVANGELICAL LUTHERAN
 CHURCH IN AMERICA

NON-PROFIT ORGANIZATION
 U.S. POSTAGE
 PAID
 PERMIT #90
 JEFFERSONVILLE, IN 47130

SERVING AT FAITH FOR THE MONTH OF DECEMBER

USHERS: MIKE AND DONNA BAUGH, AL THOMPSON, GORDON MCCALL

ALTAR GUILD: CARRIE MCCOY AND MARSHA WOODS

FINANCIAL ASSISTANT: SCOTT WYKOFF

WEEKLY ASSISTANTS:

<u>SUN.</u>	<u>ASSISTANT</u>	<u>ACOLYTE</u>	<u>CRUCIFER</u>	<u>NURSERY</u>	<u>SOCIAL</u>	<u>GREETERS</u>
1	Carol Taylor	Matt Craven	Josh Landis	Cathy Holman	?	?
8	Ed Peter	Samantha McCoy	Kirsten McCoy	Virginia Klemens	?	?
15	Marsha Woods	Kristina Peter	Brittany Searcy	Vivian Smith	?	?
22	Bev Haire	W. Czerwonka	K. Czerwonka	Lisa Peter	?	?
29	Veronica Rife	Katie Rife	Sarah Rife	Merecith Riekhof	?	?